

Alliance Healthcare UK Opening Hours Easter 2022

For Pharmacy/Retail - England and Wales

Date	Working	Cut-off	Delivery
Thursday 14th April 2022	Normal Day	Standard	Standard AM and PM deliveries
Friday 15th April 2022	Closed	N/A	No deliveries. Emergency call out service only
Saturday 16th April 2022	Normal Day	N/A	AM delivery of all Medical orders transmitted up to normal evening cut off on Thursday 14th April 2022
Sunday 17th April 2022	Closed	N/A	No deliveries. Emergency call out service only
Monday 18th April 2022	Closed	N/A	No deliveries. Emergency call out service only
Tuesday 19th April 2022	Normal Day	Standard	AM delivery of all Medical orders transmitted up to normal cut off on Sunday 17th April 2022, PM deliveries as normal



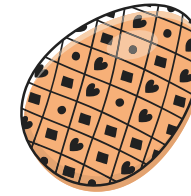
Alliance Healthcare keeping you informed

Over the Easter period, our service centres' opening hours will be changing, but as always we offer emergency courier service wherever required. Please retain a copy of this information for your records.

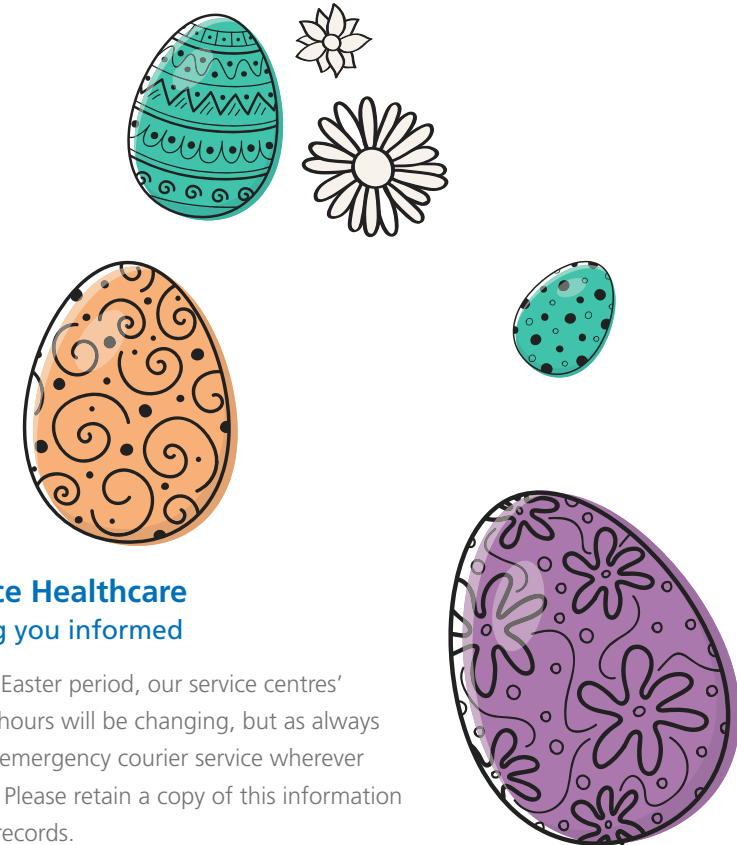
Please see next page for Scotland details.

Alliance Healthcare UK Opening Hours Easter 2022

For Pharmacy/Retail - Scotland



Date	Working	Cut-off	Delivery
Thursday 14th April 2022	Normal Day	Standard	Standard AM and PM deliveries
Friday 15th April 2022	Normal Day	Standard	Standard AM and PM deliveries
Saturday 16th April 2022	Normal Day	N/A	AM delivery of all Medical orders transmitted up to normal evening cut off on Friday 15th April 2022
Sunday 17th April 2022	Closed	N/A	No deliveries. Emergency call out service only
Monday 18th April 2022	Closed	N/A	No deliveries. Emergency call out service only
Tuesday 19th April 2022	Normal Day	Standard	AM delivery of all Medical orders transmitted up to normal cut off on Sunday 17th April 2022. PM deliveries as normal



Alliance Healthcare keeping you informed

Over the Easter period, our service centres' opening hours will be changing, but as always we offer emergency courier service wherever required. Please retain a copy of this information for your records.

Please see next page for Northern Ireland details.



Alliance Healthcare UK Opening Hours Easter 2022

For Pharmacy/Retail - Northern Ireland

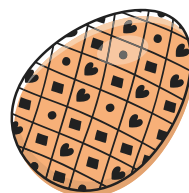
Date	Working	Cut-off	Delivery
Thursday 14th April 2022	Normal Day	Standard	Standard AM and PM deliveries
Friday 15th April 2022	Normal Day	Standard	Standard AM and PM deliveries
Saturday 16th April 2022	Normal Day	N/A	AM delivery of all Medical orders transmitted up to normal evening cut off on Friday 15th April 2022
Sunday 17th April 2022	Closed	N/A	No deliveries. Emergency call out service only
Monday 18th April 2022	Closed	N/A	No deliveries. Emergency call out service only
Tuesday 19th April 2022	Closed	N/A	No deliveries. Emergency call out service only



Alliance Healthcare keeping you informed

Over the Easter period, our service centres' opening hours will be changing, but as always we offer emergency courier service wherever required. Please retain a copy of this information for your records.

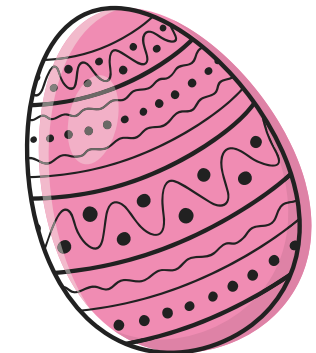
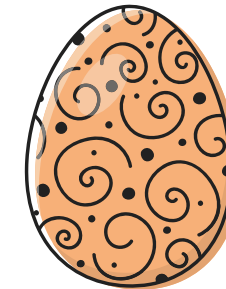
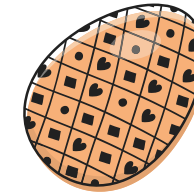
Please see next page for our NWOS details.



Alliance Healthcare UK Opening Hours Easter 2022

For Pharmacy/Retail - NWOS

Date	Working	Cut-off	Delivery
Thursday 14th April 2022	Normal Day	Standard	Standard delivery
Friday 15th April 2022	Closed	Standard	No deliveries
Saturday 16th April 2022	Normal Day	N/A	Standard delivery
Sunday 17th April 2022	Closed	N/A	No deliveries
Monday 18th April 2022	Closed	N/A	No deliveries
Tuesday 19th April 2022	Normal Day	N/A	Standard delivery

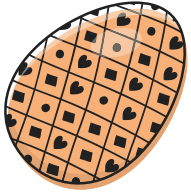
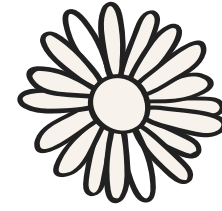


Alliance Healthcare keeping you informed

Over the Easter period, our service centres' opening hours will be changing, but as always we offer emergency courier service wherever required. Please retain a copy of this information for your records.

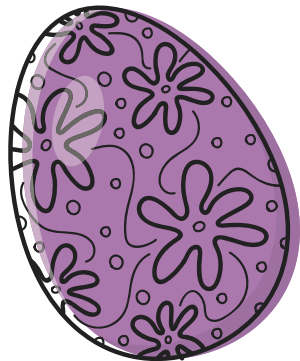
*Please see next page for
our Emergency Order Process.*





In the event of an **emergency** (i.e., urgent CD lines being required) **when the Service Centre is open or closed**, please call customer service on

0330 100 0448



Outside of normal opening hours, when you enter your account number, you will hear a message advising you of your supplying Service Centre which you will need to make a note of, you will then be directed to the out of hours security company who will handle your call and direct it to the appropriate service centre.

The previous numbers will no longer be in use, so please ensure you update your records with the number above to ensure there is no delay with your request.

Please note, all emergency call outs will incur a £100 charge, plus courier charges.

During this peak trading period, when there is exceptional demand throughout our business, we thank you for your cooperation in ensuring that your transmission times are strictly adhered to.

